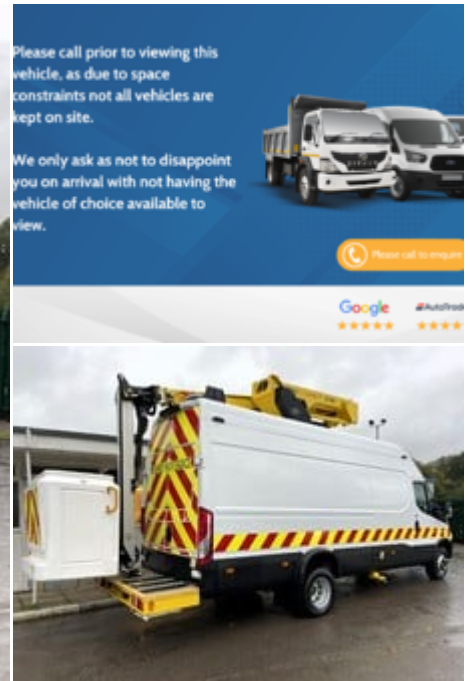


2018 (68) Iveco Daily 70C18V Cherry Picker - Versalift LAT-160-F

£39,990
+ VAT



Technical Data

Year: **2018 (68)**
Mileage: **30,305 miles**
Wheel Base: **Extra Long**
Euro Status: **6**
Engine Size: **3.0L**
Transmission: **Automatic**
Fuel Type: **Diesel**
Colour: **White**
Tax Rate: **£335 per year**
Seats: **3**

Specification

Automatic	Euro 6
360 Degree Camera's	Double Rear Wheels
3 Months/3000 Mile Drivetrain Warranty	Versalift LAT-160-F
Bluetooth	Electric Front Windows
Power Steering	CD Player
FM Radio	USB Connectivity
Barn Doors	Side Loading Door
Cloth Interior	Height Adjustable Seat
Dual Passenger Seat	Folding Front Seat
ABS	Multiple Air Bags

Description

Ideal Commercials present this 2018 Iveco Daily 70c18v Xlwb Cherry Picker Panel Van finished in White. This one owner is fitted with Iveco's 3.0 Turbo Diesel 180ps Euro 6 Engine and 8 Speed Automatic Gearbox and has covered only 30305 Miles and is supplied with a Fresh Test and Full Service and 3 Months Drivetrain Warranty. Fitted with Versalift's LAT-160-F Cherry Picker, this vehicle has a 16.5m Working Height, and 7.3m Outreach, with Deployable Stability Legs. Inside you will find a 360 Camera System with Backup Camera, Bluetooth Phone and Media Connectivity, Digital Tachograph, Lane Departure Warning, CD Player with FM Radio and USB Input, Electric Windows, Passenger Air...