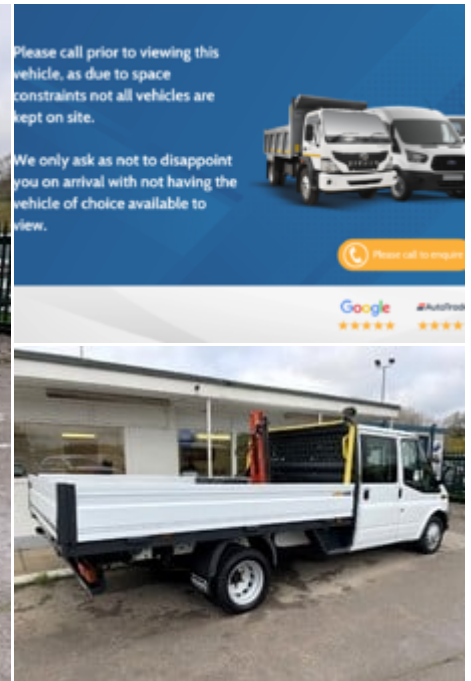


2011 (61) Ford Transit 350 Drw Ef Crew Cab Dropside with Palfinger Crane

£16,990
+ VAT



Technical Data

Year: **2011 (61)**
Mileage: **53,379 miles**
Wheel Base: **Long**
Euro Status: **5**
Engine Size: **2.2L**
Transmission: **Manual**
Fuel Type: **Diesel**
Colour: **Frozen White**
Tax Rate: **£335 per year**
Seats: **6**

Specification

Palfinger PC1500 Crane
One Stop Body
Electric Front Windows
FM Radio
Steering Wheel Audio Controls
Cloth Interior
Drivers Arm Rest
ABS
Anti Theft System
3 Seat Rear Bench
Double Rear Wheels
UK Mainland Delivery
CD Player
Aux Audio Input
Tailgate
Height Adjustable Seat
Dual Passenger Seat
Remote Central Locking
3 Months Warranty
Euro 5

Description

Ideal Commercials present this 2011 Ford Transit 350 Ef Double Cab Dropside finished in Frozen White. This two owner vehicle is fitted with Ford's 2.2 Tdci Euro 5 Engine and 6 Speed Gearbox and has covered 53379 Miles and is supplied Fully Serviced and with 3 Months Warranty. Inside you will find CD Player with FM Radio & Aux Connectivity, Electric Windows, Height Adjustable Drivers Seat with Arm Rest, Dual Passenger Seat, and a 3 Sear Rear Bench. Externally you will find Dual Rear Wheels, One Stop Body, and Palfinger PC1500 Crane Mounted Behind the Cab. To save your time we offer a UK Mainland Delivery Service to help with those busy days. Vehicle supplied H...